



Swamp Stomp

Where: *Spicer Lake Nature Preserve*
50840 County Line Road
New Carlisle, IN 46552
Nature Center Phone at Bendix Woods: 574/654-3155

Date of Program

Schedule:

Meet park interpreters at Visitor Center for introduction to wetlands

Hike through swamp

Return to building. Divide group into boys/girls. One group goes to maintenance building, the other goes to the Wet Lab to change.

Important Reminders:

Students must wear long pants and closed shoes (**no sandals**). **We recommend that students wear a swimsuit under their old clothes.** Old clothes are recommended since the mud may stain clothing. Boots are **not** recommended.

Students must bring a **COMPLETE** change of clothes to change into after the program. (Including a dry pair of shoes and underclothes.) Students should bring an old towel to dry off with and a garbage bag to take their wet clothes home in.

Please share this schedule and information with any other adults who will be attending this field trip.

Administrative Offices:
 St. Patrick's
50651 Laurel Road
South Bend, IN 46637
574/277-4828
Fax: 574/273-2334

Interpretive Services
Offices:
 Bendix Woods
32132 SR 2
New Carlisle, IN 46552
574/654-3155
Fax: 574/654-3674

Ferrettie-Baugo Creek
57057 Ash Road
Osceola, IN 46561
574/674-9765
Fax: 574/674-9778

Spicer Lake
County Line Road
New Carlisle
574/654-3155 for info

Pre-Visit Activities Swamp Stomp!

The activities included in your pre-visit packet have been designed to help you and your students prepare for your upcoming Swamp Stomp program at St. Joseph County Parks. The activities included in this packet have been designed to help your students understand and appreciate the importance of wetlands. By completing the enclosed activities prior to their visit, they will have a better understanding of the activities they will participate in at the park. If you do not have time to do the activities prior to your park visit, they will work as a post-review.

Note to Teachers: *This portion of the pre-visit packet reviews the wetlands found in Indiana. Below is the **Teacher Informational Section**. A student worksheet **Kinds of Wetlands** page is provided.*

<i>Types of Wetlands</i>	Marsh	Swamp	Bog
Location	<ul style="list-style-type: none"> • along shores of rivers, streams, shallow ponds and lakes 	<ul style="list-style-type: none"> • along rivers, streams and lakes 	<ul style="list-style-type: none"> • in northern climates • often in deep depressions with no drainage
Plants	<ul style="list-style-type: none"> • cattail • arrowhead 	<ul style="list-style-type: none"> • woody stemmed plants: trees and shrubs 	<ul style="list-style-type: none"> • layers of peat evergreen trees, peat moss and insect/eating plants
Water	<ul style="list-style-type: none"> • up to 7 feet of water 	<ul style="list-style-type: none"> • shallow water that may dry up during the summer months 	<ul style="list-style-type: none"> • very deep, open water • acidic

Swamp Phrases and Swamp History



In the past people said, marshes and swamps breathed out **Malaria**. Malaria means “bad air.”

The **Seminole Indians** of southern Florida escaped American soldiers by fleeing to the famous wetlands **the Everglades**.

During the **Revolutionary War**, the **Swamp Fox** hid in trees to ambush the orderly marching English troops.

Cowboys of the Old West some times ordered **swamp seed** for supper. You eat it too, but you call it **rice!**

*Extra: Ask students to do an internet search about the times and people **highlighted in Bold text**.*

Kinds of Wetlands!

Name: _____



Below are different kinds of Wetlands. Write down the location, types of plants and animals found and the amount of water found in each.

Type of Wetland	Marsh	Swamp	Bog
Location			
Plants			
Water			
Kinds of Animals			
Other "Cool" Facts			

Swamp Stomp Word Scramble Name: _____

Unscramble the words below and write the correct spelling on the line.

1. Wetlands assist with controlling this problem.



 lodfos

2. This kind of wetland has lots of cattails, reeds and grasses.

 amrhs

3. Trees growing in standing water are what kind of wetland?

 wamps

4. Decaying, organic matter is turned into this....

 edtrtisu

5. In this closed system, water enters in the form of rain and peat may form a floating mat. Common plants found: pitcher plant and sundews.

 gob

6. A great mixture of living things.

 ibdovireisyt



7. The process where an ecosystem moves from one natural state to another.

 usccseisno

8. Soil that does not drain well, retains water.

 dyhirc oils



9. Animals that do not have a spine or a backbone.

 nievtrbeartse

Answers

floods

marsh

detritus

bog

invertebrates

hydric soils

swamp

biodiversity

succession



Teacher Answer Key: Swamp Stomp Word Scramble

Students are to write in the correct word and spelling.

1. Wetlands assist with controlling this problem.



floods
lodyfos

2. This kind of wetland has lots of cattails, reeds and grasses.

marsh
amrsh

3. Trees growing in standing water are what kind of wetland?

swamp
wamps

4. Decaying, organic matter is turned into this....

detritus
edtrtisu

5. In this closed system, water enters in the form of rain and peat may form a floating mat. Common plants found: pitcher plant and sundews.

bog
gob

6. A great mixture of living things.

biodiversity
ibdovireisyt



7. The process where an ecosystem moves from one natural state to another.

succession
uscseisno



8. Soil that does not drain well, retains water.

hydric soils
dyhicr oils

9. Animals that do not have a spine or a backbone.

invertebrates
nievtrbeartse

Answers

floods
marsh
detritus
bog
invertebrates
hydric soils
swamp
biodiversity
succession





Name: _____

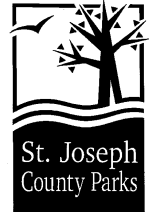
Swamp Stomp True and False

Test your skills about wetlands, swamps and bogs.
Circle True or False.

1. True/False Most snakes that live in swamps are venomous.
2. True/False The dam-building practices of **mink** have helped to create wetlands.
3. True/False Parts of freshwater wetland plants have been made into flour for pancakes and stuffing for mattresses.
4. True/False A man who fell into a bog and died about 2000 years ago was found in the 1950's almost perfectly preserved.
5. True/False People can build artificial swamps that can help filter pollution.
6. True/False If it hadn't been for glaciers, many of the bogs in North America would not be here today.
7. True/False President Jimmy Carter gave an executive order to *protect wetlands*.
8. True/False More than half of all our state's wildlife depends on wetlands for food, shelter or nesting.
9. True/False Wetlands may be dry for a period of the year.
10. True/False The idea for today's marshmallow treats came from a candy made from the wetland herb called "marsh-mellows."

Swamp Stomp True and False

Teacher Answer Key

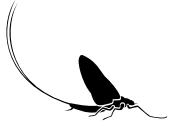


1. True/False Most snakes that live in swamps are venomous.
False The Massasauga Rattlesnake is the only venomous snake found in wetland habitats in Northern Indiana.
2. True/False The dam-building practices of **mink** have helped to create wetlands.
False Answer **beaver**. The beaver builds lodges along water ways and ditches.
3. True/False Parts of freshwater wetland plants have been made into flour for pancakes and stuffing for mattresses.
True All parts of the cattail plant can be used: shoots, roots and stalks.
4. True/False A man who fell into a bog and died about 2000 years ago was found in the 1950's almost perfectly preserved.
True Bogs have very little decomposition of organic matter creating tannic acid which preserves bodies.
5. True/False People can build artificial swamps that can help filter pollution.
True
6. True/False If it hadn't been for glaciers, many of the bogs in North America would not be here today.
True The name of the glacier which covered Indiana around 14 thousand years ago was the Wisconsin Glacier.
7. True/False President Jimmy Carter gave an executive order to **protect wetlands**.
True President Jimmy Carter was our 39th president.
8. True/False More than half of all our state's wildlife depends on wetlands for food, shelter or nesting.
True
9. True/False Wetlands may be dry for a period of the year.
True
10. True/False The idea for today's marshmallow treats came from a candy made from the wetland herb called "marsh-mellow."
True Marsh-Mellow sap from the plant, marsh-mellow (*althea officinalis*), was used during the 1800's to make marshmallow candy.

Name: _____

Swamplands are Cool!

**Below are various animals, plants and kinds of wetlands.
Test your skills and find all the words!**



P S C A T T A I L S S C D S T
S I E B K N L Y F S P C O P U
G E T K N Z G M R U I G O M R
O O D C A S G O R F C B W A T
B O B G H L N E F P E S G W L
T A B E E E E A T Z B P O S E
M A R S H S R L P K U O D N S
S Z C O Q C E P T L S N Y O C
S U T I R T E D L T H G K R W
X G R I C K L O F A E E L E V
F E R T I L I Z E R N K I H A
S O T I U Q S O M M G T S E F
S A V E W E T L A N D S S U O
Y L F N O G A R D C H Y G L O
N X H S U B N O T T U B V B W

**SAVE WETLANDS
SEDGES
SILKY DOGWOOD
SPICEBUSH
SPONGE
SWAMPS
TURTLES**

**BAT
BLUE HERON
BOG
BUTTON BUSH
CAT TAILS
DETRITUS
DRAGONFLY**

**FEN
FERTILIZER
FROGS
KETTLE LAKES
MARSH
MOSQUITOS
PITCHER PLANTS**

