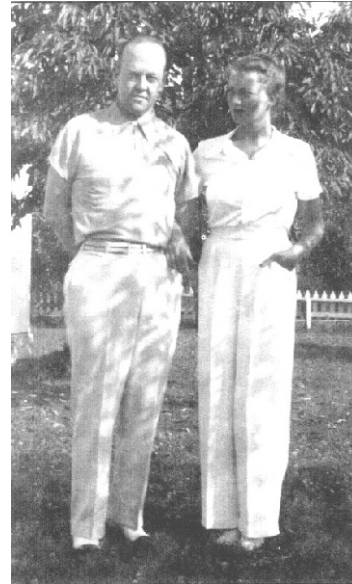




In 1938 (before the Manion family bought the cabin), they built a 10-foot dam on the creek south of the cabin, which created a two-acre pond and waterfall. The family spent time swimming and fishing in this beautiful pond, which still provides a quiet, secluded fishing and picnic spot for visitors to St. Patrick's.



Clarence and Virginia Manion

Over the years, the cabin was used as a guesthouse for visitors and horse customers, and several Manion family members lived in the cabin. The last time that anyone lived in the cabin was from 1984 to 1988 when Dan Manion (Clarence and Virginia's son) and his wife Ann lived there while building a new house.

On July 13, 1979, Clarence and Virginia Manion signed a letter of intent to donate part of their property, including the cabin, to St. Patrick's County Park. This was the last official document that Clarence Manion signed, as he suffered a stroke the following day and passed away two weeks later.

The Manion family wished to share with the community the peace and beauty which they had enjoyed for so many years. Through their generosity, the land's natural beauty has been preserved, and development has been limited. Visitors continue to enjoy the Manions' gift.

The Manion Log Cabin St. Patrick's County Park

The first sale of the land on which the Manion Cabin now stands took place on September 11, 1833, when Daniel Wagner purchased the land from the state of Indiana. The land passed from one owner to another over the years, and the cabin was built in 1918 or 1919 by Frank Gilmer.

On February 25, 1952, Clarence (Pat) Manion and Virginia (Gina) O'Brien Manion purchased the property and cabin from Virginia's brother John. The Manion family loved nature and the land. For many years they raised Arabian horses, chickens, hogs, cattle, hay and grain parts of what is now St. Patrick's County Park.



Rent the Cabin!

The restoration of the cabin for use by park visitors was a project of the Friends of St. Patrick's County Park. The cabin is available for rentals. Sleeping accommodations for eight people provide the perfect weekend get-away for your family. It is also ideal for your business or organization. For more information, call 574-277-4828 or visit our website at www.sjcparks.org.

Cost

- * \$350.00 for the weekend (3:00 pm Friday through 3:00 pm Sunday);
\$85/additional night
- * \$160.00 for a weekday (8:00 am to 5:00 pm)

Amenities

- * Sleeping accommodations for eight; maximum occupancy 30 persons
- * Three bedrooms with a full- or queen-sized bed in each room.
- * Full kitchen with refrigerator and stove.
- * Two bathrooms, one with an old-fashioned claw foot tub, the other with a shower stall
- * Two fireplaces (with firewood), one in the living room, one in the master bedroom
- * The cabin comes with an open air shelter that holds 30 people. It contains picnic tables and a grill

