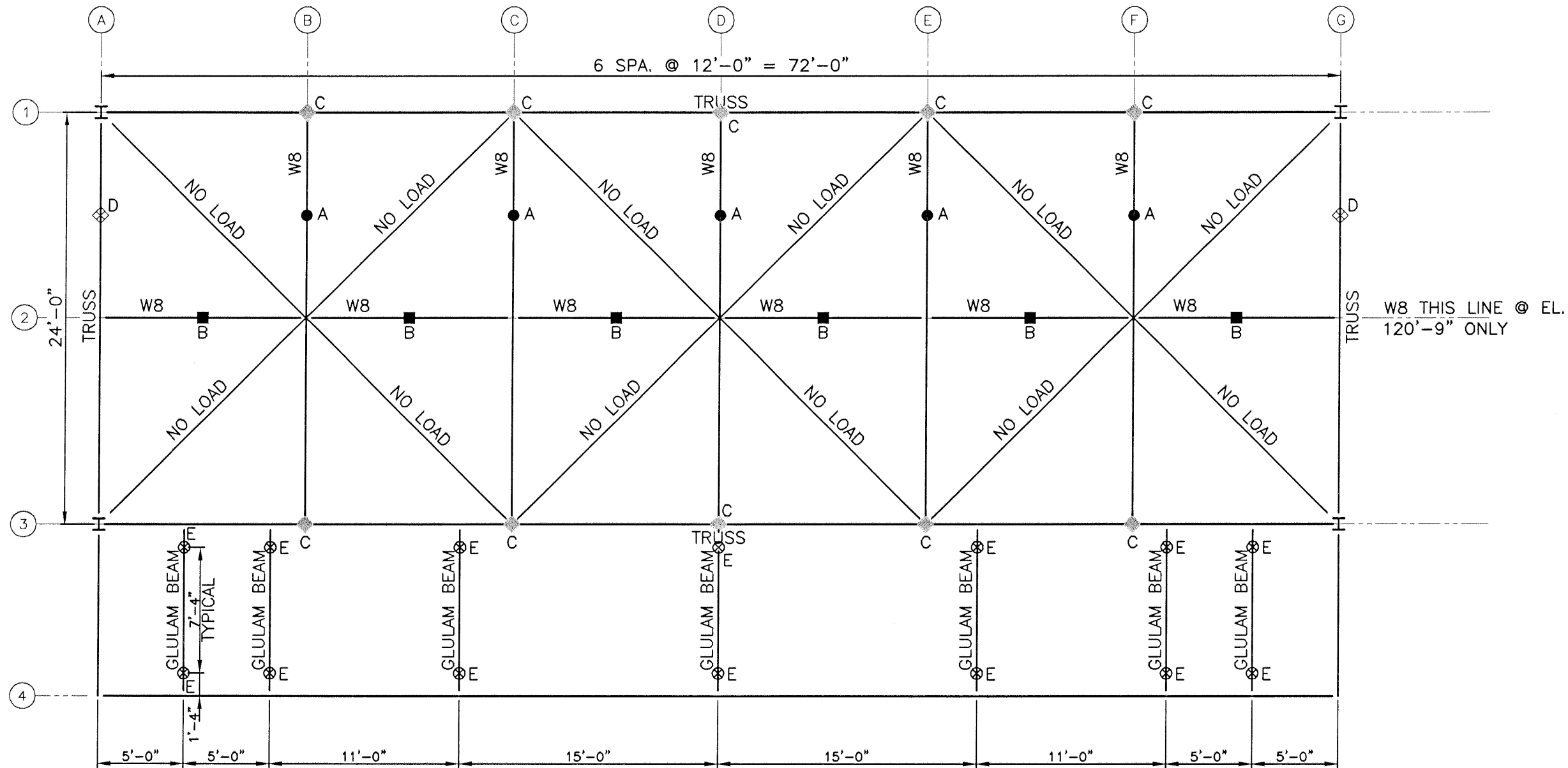


1. THE FOLLOWING LIVE LOADS CAN BE APPLIED TO THE STRUCTURE EXCEPT ALL LIVE LOADS MUST BE REMOVED PRIOR TO WINTER; FOLLOWING LOAD COMBINATIONS (CASE A, CASE B & CASE C) CAN NOT BE CONCURRENT, i.e., ONE LOAD CASE AT A GIVEN TIME.

- CASE A.: W8 BEAMS ON LINES B THROUGH F BETWEEN LINES 1 & 3; ANY COMBINATION OF GRAVITY LOADS (UNIFORM OR CONCENTRATED), NOT TO EXCEED 6000 POUNDS TOTAL VERTICAL LOAD. LOAD MAY NOT BE APPLIED TO TOP AND BOTTOM GRID SIMULTANEOUSLY.
- CASE B.: W8 BEAMS (12'-0" SEGMENTS) ON LINE 2 BETWEEN LINES A & G; ANY COMBINATION OF GRAVITY LOADS (UNIFORM OR CONCENTRATED) NOT TO EXCEED 4000 POUNDS TOTAL VERTICAL LOAD ON EACH BEAM.
- ◆ CASE C.: TRUSS ON LINES 1 & 3 BETWEEN LINES A THROUGH G; A GRAVITY LOAD NOT TO EXCEED 6000 POUNDS TOTAL VERTICAL LOAD AT EACH TRUSS PANEL POINT. LOAD MAY NOT BE APPLIED TO TOP & BOTTOM CHORD OF TRUSS SIMULTANEOUSLY.

2. TRUSS LOADS WHICH MAY BE CONCURRENT WITH LOAD CASE A, B, AND C:

- ◆ CASE D.: TRUSS ON LINES A & G BETWEEN LINES 1 THROUGH 3; ANY COMBINATION OF GRAVITY LOADS (UNIFORM OR CONCENTRATED) NOT TO EXCEED 6000 POUNDS TOTAL VERTICAL LOAD. LOAD MAY NOT BE APPLIED TO TOP & BOTTOM CHORD OF TRUSS SIMULTANEOUSLY.
- ⊗ CASE E.: ANY COMBINATION OF TWO POINT LOADS NOT TO EXCEED 1000 POUNDS TOTAL PER BEAM CAN BE APPLIED AT THE HANG POINTS THAT ARE LOCATED 7'-4" APART ON EACH GLULAM BEAM.



PLAN OF STEEL GRID @ ELEVATIONS 120'-9" AND 129'-10 1/2": ALLOWABLE LIVE LOAD DIAGRAM

NOTE: SUMMER USAGE ONLY. ALL LIVE LOADS TO BE REMOVED PRIOR TO WINTER.
SCALE: N.T.S.

DESCRIPTION: ALLOWABLE LOADING DIAGRAM PLAN AT BOTTOM CHORD AND TOP CHORD	PROJECT NO.	DATE: 6/13/00
--	-------------	---------------

ROBERT FISCHGRUND AMPHITHEATER
ST. PATRICK'S PARK
ST. JOSEPH COUNTY, INDIANA

